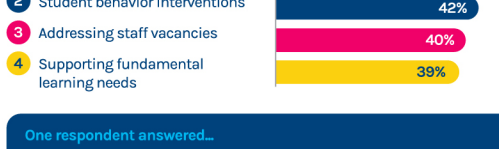


# Spring 2025 National U.S. Educator Survey

## Top challenges, priorities and insights in K-12 education

This year's survey offers a clear snapshot of educators' aspirations and challenges. Drawing on 2,500+ responses from teachers, administrators, and leaders across the U.S., this infographic explores both modern education and emerging trends.

### Top education challenges



One respondent answered...  
Addressing behavioral issues and lack of student engagement

### Top edtech priorities



One respondent answered...  
Insights into multiple factors of the student's progress

### We asked:

Which tech trend do you think will have the most significant impact on student learning in the next 2-4 years?



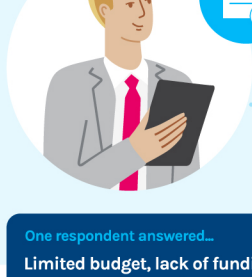
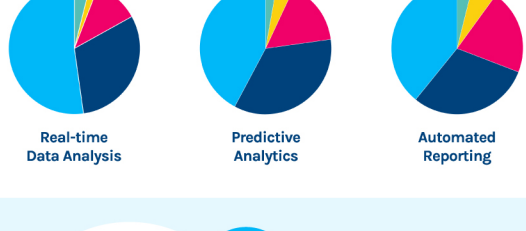
#### The No. 1 answer:

AI tools to support and personalize student learning

One respondent answered...  
ANYTHING that will help teachers spend more time with students and less time being fragmented by multiple non-interactive technology platforms

### Where educators see value in using AI for data insights

Low Value 1 2 3 4 5 High Value



### We asked:

What's your top hurdle for developing & approving budgets

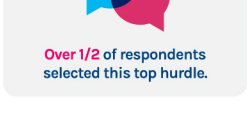
#### The No. 1 answer:

Political unknowns and economic fluctuations that may impact funding

One respondent answered...  
Limited budget, lack of funding sources, and declining enrollment are hurdles to our budget process

### We asked:

What are your biggest challenges to effectively communicating with families?



Over 1/2 of respondents selected this top hurdle.

#### The No. 1 answer:

Cultural or language differences

#### Insight:

With increased diversity, K-12 schools are being asked to consider how best to communicate and support all families.

### We asked:

What does everyone need to improve communication around attendance?



Over 1/3 of respondents selected this top hurdle.

#### The No. 1 answer:

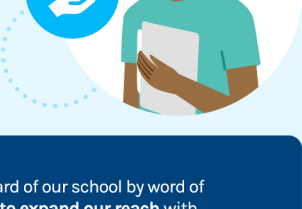
All forms of communication in a single platform

#### Insight:

With a single pane-of-glass approach, K-12 can ensure families are engaged and attendance is prioritized.

### We asked:

What's giving your school or district the competitive edge in finding new talent?



#### The No. 1 answer:

Showing that we have a culture of teacher support

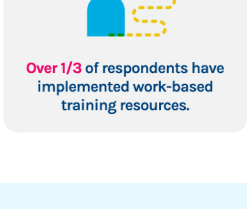
One respondent answered...  
Many of our staff have heard of our school by word of mouth, but we're looking to expand our reach with an online job board

### Top priorities for supporting HR and Talent

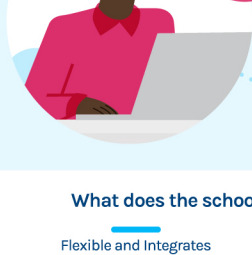


### What programs are offered to support post-secondary planning?

- College fairs and visits from colleges
- Counseling staff for college applicants
- Access to funding resources



Over 1/3 of respondents have implemented work-based training resources.



### Competency-Based Education (CBE)

60% said competency-based education planning is underway in their organizations.

### What does the school of the future look like?

- Flexible and Integrates Learning Spaces
- Hands-On and Immersive Learning Experiences
- Personalized and AI-Enhanced Learning
- Competency and Skill-Based Education
- Project-Based and Interdisciplinary Learning
- Flexible Schedules and Learning Autonomy

## Education Focus Report

See how national education challenges and priorities have shifted over time.

[Check out our 2024 Education Focus Report](#)

Coming Soon! The next Education Focus Report will launch in January 2026.